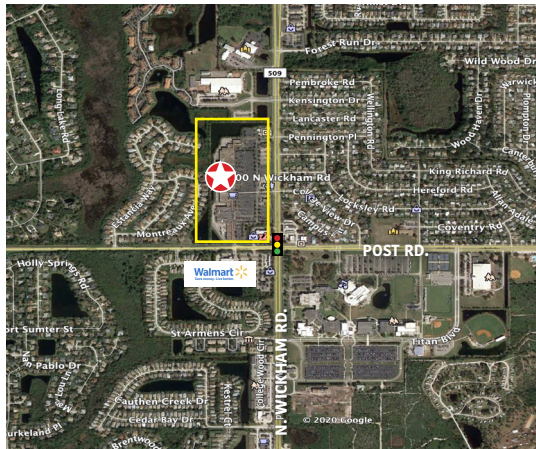
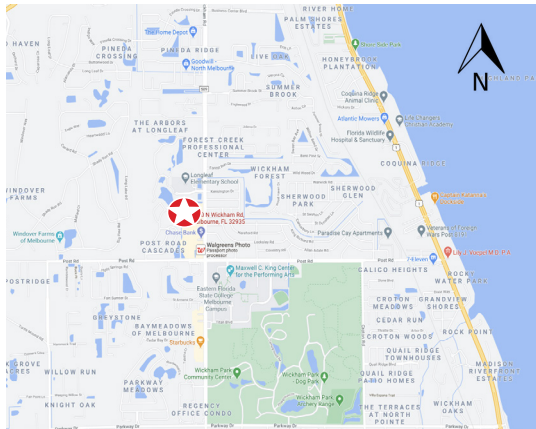


Post Commons

4100 N. Wickham Rd. Melbourne, FL 32935



Project Highlights

- Excellent frontage along North Wickham Road in one of Brevard County's busiest north/south corridors
- Across from Eastern Florida State College and the Maxwell C. King Center for the Performing Arts
- Tenants include Publix, Bealls Department Store, Bealls Outlet, Pet Supermarket, Panera Bread and more
- Anchor Opportunity Available - Will Subdivide - 31,000 SF +/-
- Excellent inline opportunities available

PHYSICAL SITE CHARACTERISTICS

Daily Traffic Counts:

Post Rd.(E/W): 9,195 AADT
N. Wickham Rd.(N/S): 36,720 AADT

GLA:

201,250

Lat/Lon:

28.1746/-80.6737

County:

Brevard

DEMOGRAPHICS (2020)

Population:

1 MILE

3 MILES

5 MILES

Avg HH Income:

\$102,941

\$91,493

\$94,487

Lynda Nagy, Senior Vice President
863.646.4567 (o) | 561.961.9958 (m)
lnagy@retailsolutionsadvisors.com
RetailSolutionsAdvisors.com



The information contained herein has been obtained from sources deemed reliable but has not been verified and no guarantee, warranty or representation, either express or implied, is made with respect to such information. Terms of sale or lease and availability are subject to change or withdrawal without notice.

Post Commons

4100 N. Wickham Rd. Melbourne, FL 32935

Lynda Nagy, Senior Vice President
863.646.4567 (o) | 561.961.9958 (m)
lnagy@retailsolutionsadvisors.com



UNIT	TENANT	SF	UNIT	TENANT	SF
101	AAA	4,800	126	Beall's Outlet	21,000
103	Thrift Shop	1,200	130	Beall's Dept. Store	47,500
104	Soup Shop	2,400	132	AVAILABLE	30,979
105	Tobacco Zone	900	137	Cedars Restaurant	900
106	Diane's Nails	1,200	138	Global Tours & Travel	1,200
107	Firehouse Subs	1,500	139	AVAILABLE	1,200
107A	Mailman Joey	1,200	140	Humana Health	1,800
108	Enotria	1,200	144	Panera Bread	4,500
109	Publix	44,270			
36	Publix Liquors Store	1,340			
113	9 Round	1,200			
113A	China King	1,200			
114	Hair Cuttery	1,200			
116	AVAILABLE	6,300			
117	Pet Supermarket	12,573			
120	Bonworth	4,488			
121	Papa Murphy's	1,200			
123	Aqua Rite	2,100			
124	Breakfast Station	1,800			
125	AVAILABLE	1,200			