

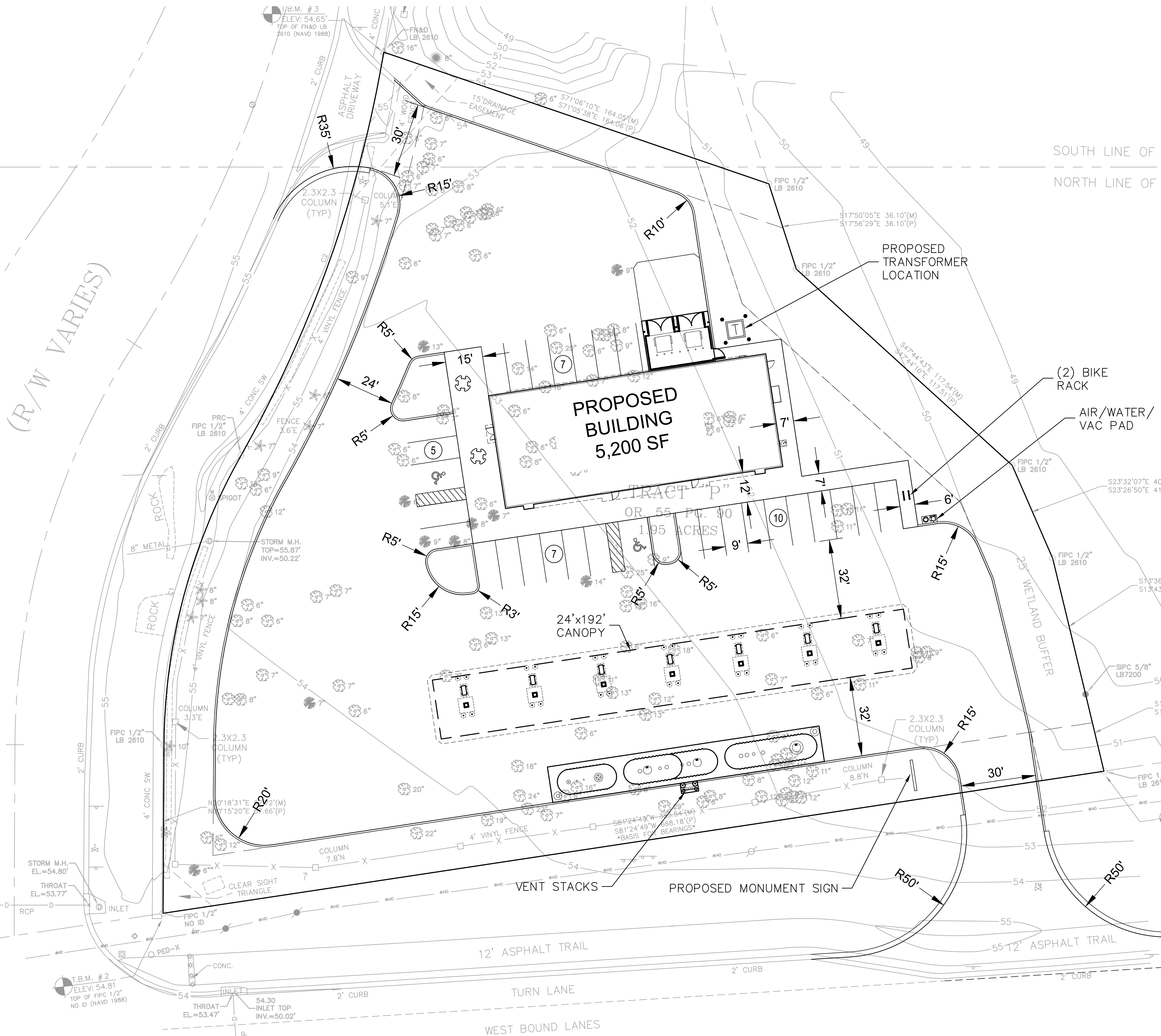
WEST BOUNDARY OF T
&
-17

WEST BOUNDARY OF THE N.E. 1/4 OF SEC. 12-25-17

SOUTH LINE OF SEC 01-25-17
NORTH LINE OF SEC 12-25-17

CANYON BOULEVARD
(R/W VARIES)

TRACT "D"
OR. 55, PG. 93



PROPOSED BUILDING
5,200 SF

24'x192'
CANOPY

PROPOSED MONUMENT SIGN

PROPOSED TRANSFORMER LOCATION

(2) BIKE RACK

AIR/WATER/VAC PAD

T.B.M. #2
ELEV: 54.81
TOP OF FIPIC 1/2"
NO ID (NAVD 1988)

T.B.M. #1
ELEV: 50.83
TOP OF FIPIC 1/2"
LB 2610 (NAVD 1988)

WEST BOUND LINES
S.R. HWY, #52 (R/W WIDTH VARIES)

12' ASPHALT TRAIL

55' 12" ASPHALT TRAIL

TURN LANE

WEST BOUND LINES